



Model: 1322WT

OPERATING AND INSTALLATION INSTRUCTIONS

IF YOU CANNOT READ OR UNDERSTAND THESE INSTALLATION INSTRUCTIONS DO NOT ATTEMPT TO OPERATE

CALIFORNIA PROPOSITION 65



WARNING

This product can expose you to Tetrabromobisphenol-A, which is known to the state of California to cause cancer.

(For more information, go to www.p65warnings.ca.gov)

INTRODUCTION

This transmitter operating range is approximately 20-feet. The transmitter operates on one of 65,536 security codes that are programmed into the transmitter at the factory; this transmitter operates on radio frequencies with non-directional signals. The receiver for this transmitter is built into the AF-4000MOD-1 module.

TRANSMITTER

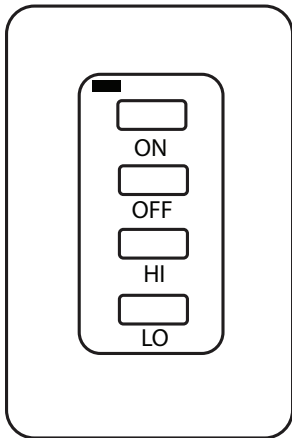


Fig. 1 1322WT Transmitter

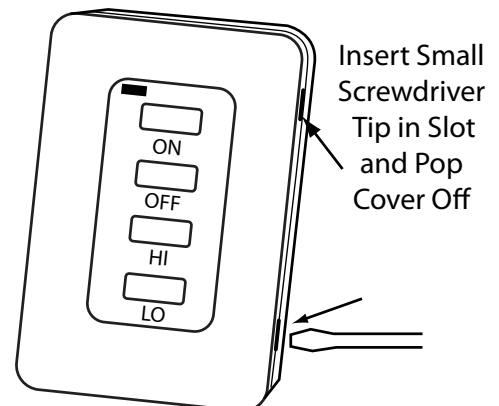
The transmitter operates with (2) 3-volt button cell batteries made specifically for remote controls and electronic lighters. Install the batteries supplied with the 1322WT as described below.

It is recommended that AKALINE batteries always be used for longer battery life and maximum operational performance.

The transmitter has ON/OFF and Hi/Lo, functions that are activated by pressing any button on the face of the transmitter. When a button on the transmitter is pressed, a signal light on the transmitter illuminates briefly to verify that a signal has been sent. Upon initial use, there may be a delay of three seconds before the remote receiver will respond to the transmitter. This is part of the system's design. If the signal light does not illuminate, check the position of the transmitter's battery.

TO INSTALL BATTERIES IN WALL MOUNT TRANSMITTER

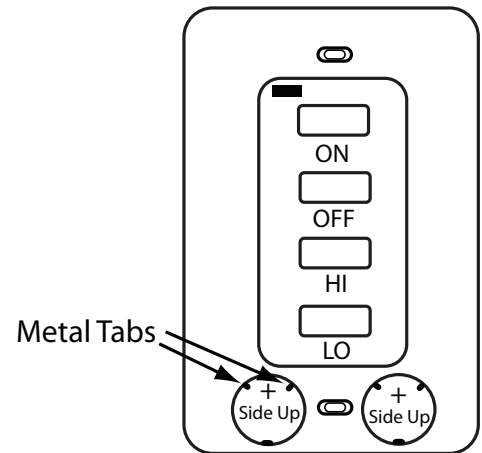
1. Remove face from backing plate by inserting a small screwdriver into the small slot at the top or bottom of the faceplate as shown then snap OFF (See Fig. 2).
2. Locate the two holders (metal tabs) for the 3V button cell batteries.
3. Place the button cell batteries into the battery holders under the metal tabs and snap into place. (Ensure the batteries are installed with the (+) plus side out as shown in Fig. 3 on page 2.)
4. After the batteries are installed replace the faceplate on the base.



TO REMOVE THE BATTERIES IN WALL MOUNT TRANSMITTER

1. Remove face from backing plate by inserting a small screwdriver into the small slot on the side at the top or bottom of the faceplate as shown then snap OFF (See Fig. 2).
2. Locate the (2) holders for the 3V button cell batteries.
3. Insert a small screwdriver into the slot at bottom of the button cell battery area and pop battery out.
4. After the batteries are installed replace the faceplate.

Fig. 2. Removing Front Cover



WALL MOUNTING THE TIMER

1. The 1322WT must be located within 20-feet of the module.
2. Remove the faceplate as shown in Fig. 2, page 1.
3. Locate the two mounting holes and mark the wall.
4. Use the (2) two dry wall anchors and screws (supplied) to mount the base plate on the wall or mounted onto an existing plastic electrical box. See Fig. 3 base plate holes centered at top and bottom of transmitter.
5. Mount plate should be mounted level for best operation.

Fig. 3 Battery Installation

LEARNING TRANSMITTER TO MODULE

Each transmitter can use one of 65,536 unique security codes. It will be necessary to program the AF-4000MOD-1 to "LEARN" the security code of the transmitter upon initial use. When matching security codes, be sure the slide button on the AF-4000MOD-1 is in the REMOTE position; the code will NOT "LEARN" if the slide switch is in the REMOTE position. To learn the security code from the transmitter to the AF-4000MOD-1 module just press and release the learn button (See Fig. 4). The module will "beep" one time. After the initial beep press any button on the 1322WT transmitter. The module will beep multiple times indicating the security code has been successfully programmed.

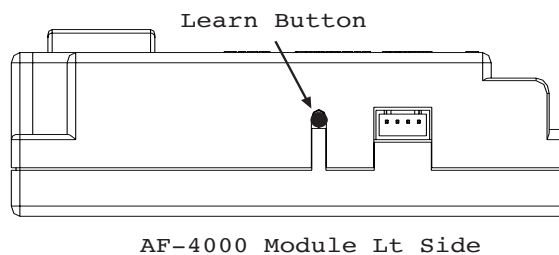


Fig. 4 Module Learn Button

HI/LO FLAME OPERATION (HI/LO Solenoid)

After pressing the ON button and the appliance in the ON position:

1. Press and release the **LO** button on the transmitter the appliance flame will go the low setting.
2. Press and release the **HI** button on the transmitter the appliance flame will go the high setting.

HI/LO FLAME OPERATION (HI/LO DC Motor Drive)

After pressing the ON button and the appliance in the ON position:

1. Press and hold the **LO** button on the transmitter release the button at the desired flame height or hold until the DC motor drive reaches the lowest flame height setting.
2. Press and hold the **HI** button on the transmitter release the button at the desired flame height or hold until the DC motor drive reaches the highest flame height setting.

Note: On front of the AF-4000BP there is a slide switch to change operation from Latching Hi/Lo Solenoid to operating the DC Motor Drive. Ensure the switch is in the correct location for your product.

CONTINUOUS PILOT FEATURE

If your system has a standing or continuous pilot (if applicable) you can change the Continuous Pilot switch to ON with the AF-4000MOD-1 module can also turn on this Continuous pilot feature.

If your gas appliance will be unattended, then the control module slide switch should be moved to the "OFF" position. Placing the switch in the OFF position serves as a safety "lock-out," rendering the entire remote system inoperative. Most gas appliances are considered supplemental heat and should not be used as a primary heat source.

BATTERY LIFE

Life expectancy of alkaline batteries in the 1322WT should be at least 12 months. Check and replace transmitter battery annually. When the transmitter no longer operates the remote receiver from a distance it did previously (i.e., the transmitter's range has decreased) or the remote receiver does not function the transmitter batteries should be checked. The transmitter should operate with as little as 2.4 volts battery power from each battery.

SPECIFICATIONS

BATTERIES: Transmitter 12V (A23) Battery

FCC ID No.'s: transmitter - K9LSP1001

Operating Frequency: 303.8 MHZ

Canadian IC ID No.'s: transmitter – 2439-102-728

FCC REQUIREMENTS

NOTE: THE MANUFACTURER IS NOT RESPONSIBLE FOR ANY RADIO OR TV INTERFERENCE CAUSED BY UNAUTHORIZED MODIFICATIONS TO THIS EQUIPMENT. SUCH MODIFICATIONS COULD VOID THE USER'S AUTHORITY TO OPERATE THE EQUIPMENT.

FCC Notification

Note: This equipment has been tested and found to comply with limits for a Class B digital device, pursuant to part 15 of the FCC Rules. These limits are designed to provide reasonable protection against harmful interference in a residential installation. This equipment generates, uses and can radiate radio frequency energy and, if not installed and used in accordance with the instructions, may cause harmful interference to radio communications. However, there is no guarantee that inference will not occur in a particular installation. If this equipment does cause harmful interference to radio or television reception, which can be determined by turning the equipment off and on, the user is encouraged to try to correct the interference by one or more of the following measures:

- Reorient or relocate the receiving antenna
- Increase the separation between the equipment and the receiver
- Connect the equipment into an outlet on a circuit different from that to which the receiver is connected
- Consult the dealer or an experience radio/TV technician for help

FOR TECHNICAL SERVICE, CALL:

U. S. INQUIRIES

855-498-8324 or 260-459-1703

CANADIAN INQUIRIES

877-472-3923

Skytech Products Group
9230 Conservation Way
Fort Wayne, IN 46809

SALES SUPPORT: (888) 699-6167

WEBSITE: www.skytechpg.com

MANUFACTURED EXCLUSIVELY FOR SKYTECH II, INC.

